

Community Wealth Building
ambitions in Edinburgh and the
vital role third sector
organisations can play.

EDINBURGH
SOCIAL
ENTERPRISE
NETWORK

SOCIAL ENTERPRISE FACTS



6,103

SOCIAL ENTERPRISES CURRENTLY
OPERATING IN SCOTLAND



60%

OF SOCIAL ENTERPRISES ARE LED
BY A FEMALE



£5.2bn

TOTAL ANNUAL INCOME OF
SOCIAL ENTERPRISES IN
SCOTLAND



£2.89bn

OF GROSS VALUE ADDED TO THE
SCOTTISH ECONOMY



90,050

FULL-TIME EQUIVALENT
EMPLOYEES IN THE SECTOR



88%

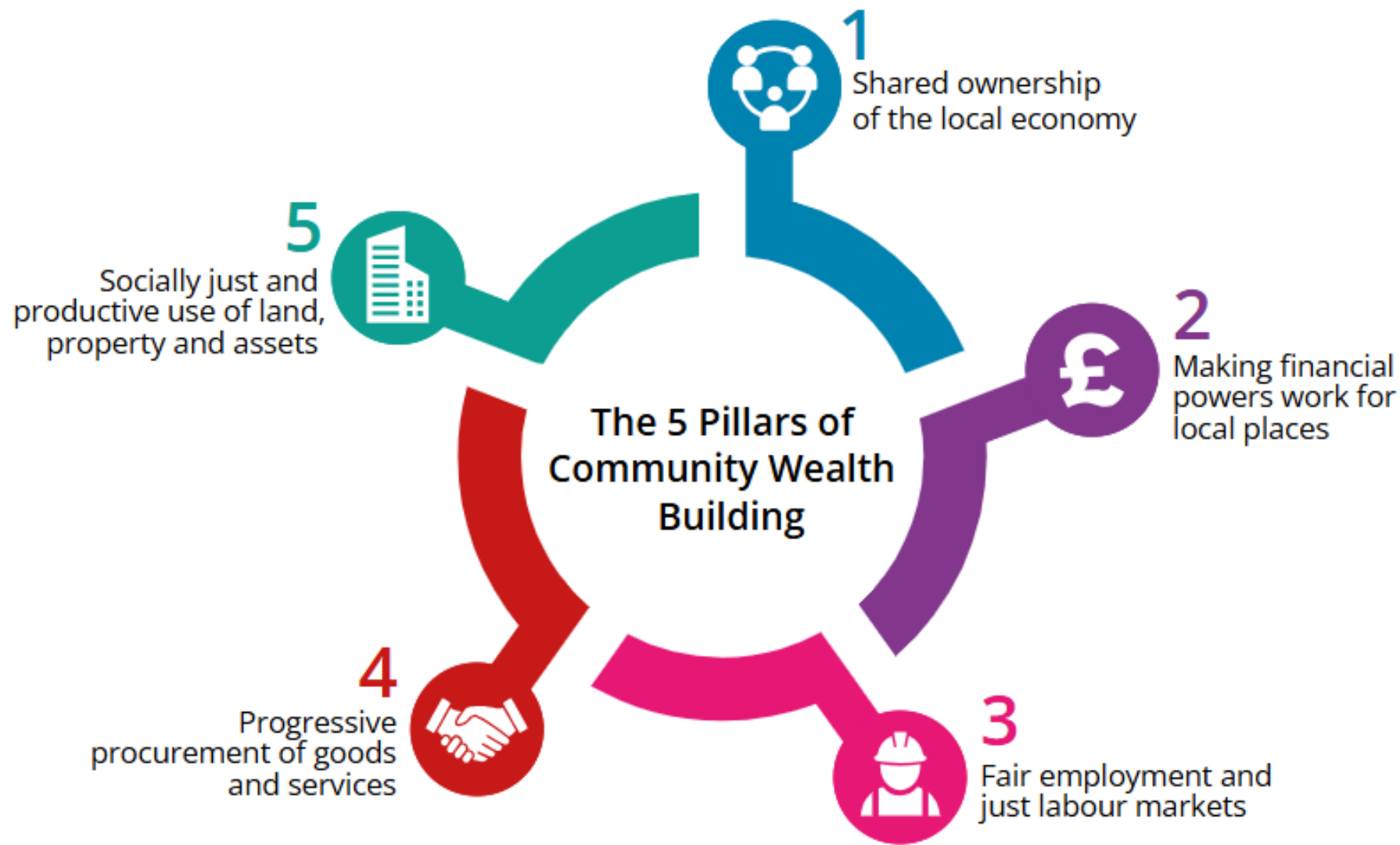
REPORT PAYING AT LEAST THE
REAL LIVING WAGE

SOCIAL ENTERPRISE FACTS

- There are 776 social enterprises in Edinburgh according to the Census and we have 265 members.
- We also work with self identified charities to help them become more financially sustainable.
- And ANY organisation who is interested in working with social enterprises in Edinburgh.

COMMUNITY WEALTH BUILDING:

An approach to economic activity that prioritises wellbeing, putting people and planet over profit



How can we contribute?

1. Be role models
2. Offer solutions
3. Challenge partners



Steve Lawrence – CEO

steve@esen.scot

Follow us on Insta, TikTok
and LinkedIn.